



Ribosomal Protein L12 Polyclonal Antibody

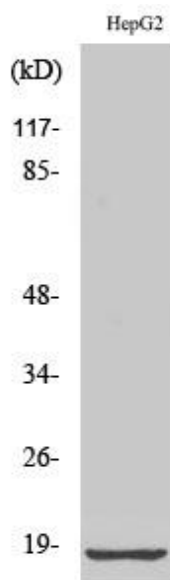
Catalog No	YP-Ab-04128
Isotype	IgG
Reactivity	Human;Mouse;Rat
Applications	WB;IHC;IF;ELISA
Gene Name	RPL12
Protein Name	60S ribosomal protein L12
Immunogen	The antiserum was produced against synthesized peptide derived from human RPL12. AA range:61-110
Specificity	Ribosomal Protein L12 Polyclonal Antibody detects endogenous levels of Ribosomal Protein L12 protein.
Formulation	Liquid in PBS containing 50% glycerol, 0.5% BSA and 0.02% sodium azide.
Source	Polyclonal, Rabbit,IgG
Purification	The antibody was affinity-purified from rabbit antiserum by affinity-chromatography using epitope-specific immunogen.
Dilution	WB: 1/500 - 1/2000. IHC: 1/100 - 1/300. ELISA: 1/40000.. IF 1:50-200
Concentration	1 mg/ml
Purity	≥90%
Storage Stability	-20°C/1 year
Synonyms	RPL12; 60S ribosomal protein L12
Observed Band	18kD
Cell Pathway	nucleolus,cytosol,focal adhesion,membrane,cytosolic large ribosomal subunit,extracellular matrix,extracellular exosome,
Tissue Specificity	Brain,Epithelium,Ovary,
Function	function:Binds directly to 26S ribosomal RNA.,similarity:Belongs to the ribosomal protein L11P family.,
Background	Ribosomes, the organelles that catalyze protein synthesis, consist of a small 40S subunit and a large 60S subunit. Together these subunits are composed of 4 RNA species and approximately 80 structurally distinct proteins. This gene encodes a ribosomal protein that is a component of the 60S subunit. The protein belongs to the L11P family of ribosomal proteins. It is located in the cytoplasm. The protein binds directly to the 26S rRNA. This gene is co-transcribed with the U65 snoRNA, which is located in its fourth intron. As is typical for genes encoding ribosomal proteins, there are multiple processed pseudogenes of this gene dispersed through the genome. [provided by RefSeq, Jul 2008],
matters needing attention	Avoid repeated freezing and thawing!



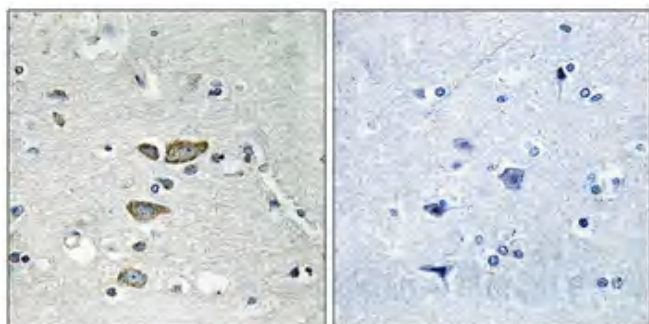
Usage suggestions

This product can be used in immunological reaction related experiments. For more information, please consult technical personnel.

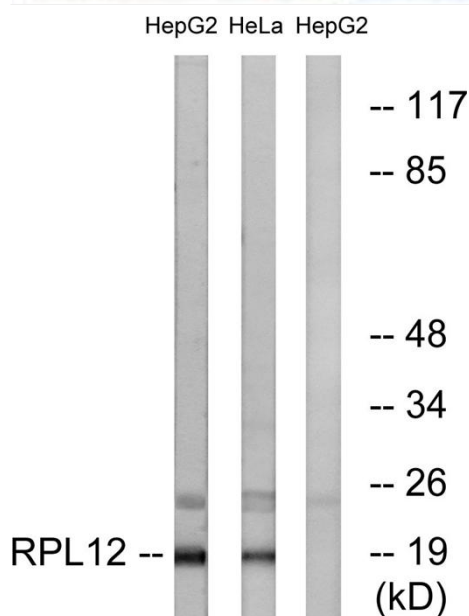
Products Images



Western Blot analysis of various cells using Ribosomal Protein L12 Polyclonal Antibody diluted at 1:2000



Immunohistochemical analysis of paraffin-embedded Human brain. Antibody was diluted at 1:100(4° overnight). High-pressure and temperature Tris-EDTA,pH8.0 was used for antigen retrieval. Negative contrl (right) obtaned from antibody was pre-absorbed by immunogen peptide.



Western blot analysis of lysates from HepG2 and HeLa cells, using RPL12 Antibody. The lane on the right is blocked with the synthesized peptide.